



Water Resistant Laminate Flooring

## DESCRIPTION OF INSTALLATION

### A. Before Installation

#### Temperature and humidity conditions of the floor and areas where flooring is to be installed:

Temperature and humidity levels of the floor and areas where flooring is to be installed must conform with the suitable temperature and relative humidity conditions for the flooring before installation, during installation and after the process. In new and renovated buildings, the room must be ventilated and must not be kept closed for long to balance room temperature and humidity levels. The laminate flooring must be kept for 48 hours before installation to fit into the areas where installation is to be made. The product's warranty will be void if the 48-hour requirement is not met. (1 - Temperature of the areas where installation is to be made must be min. +18 °C. 2 - Floor temperature must be min. +15°C. 3 - Relative humidity rate of the areas where installation is to be made must be 40-70 percent.)

#### Surface of the floor where installation is to be made:

All surfaces on which laminate flooring is to be installed must be ready for the process, according to the technical conditions that must be considered.

#### Meet the below-specified conditions, during floor inspection:

- Make sure that the floor is completely dry.
- Check the surface flatness. (Fluctuation on the surface must be <2 mm per meter.)
- Check the floor hardness.
- Clean the surface of the floor where installation is to be made (for dust, dirt, etc.)

It can be installed on concrete and ceramic tile surfaces. If there is a previous application on the floor, it should be confirmed that the floor is strong enough not to cause any problem to the laminate flooring. The flooring can be installed on underfloor heating systems with water circulation. In such case, please use kraft paper instead of foam. In addition, the product can be installed on electric underfloor heating applications (surface temperature control) if the system is embedded in concrete or concrete finish (if the heating system is not on top of the concrete layer). The floor temperature must not exceed 28°C. Please check with your heating system manufacturer to determine whether the surface temperature will not exceed 28°C before using the adjustable heating plate as flooring. Standard plate-based electric underfloor heating systems available in the market cause the surfaces to heat up much more than 28°C in extremely sudden temperature changes. Therefore, standard plate-based electric underfloor heating systems are not suitable surfaces for flooring.

#### Unsuitable floors are:

- Floors covered with textiles (carpets, rugs, etc.)
- Floors covered with PVC, linoleum, wood/laminate flooring and so on.
- Wet floors such as toilets, bathrooms, saunas.
- Interiors of vehicles.

#### Basic Rules for Flooring Installation

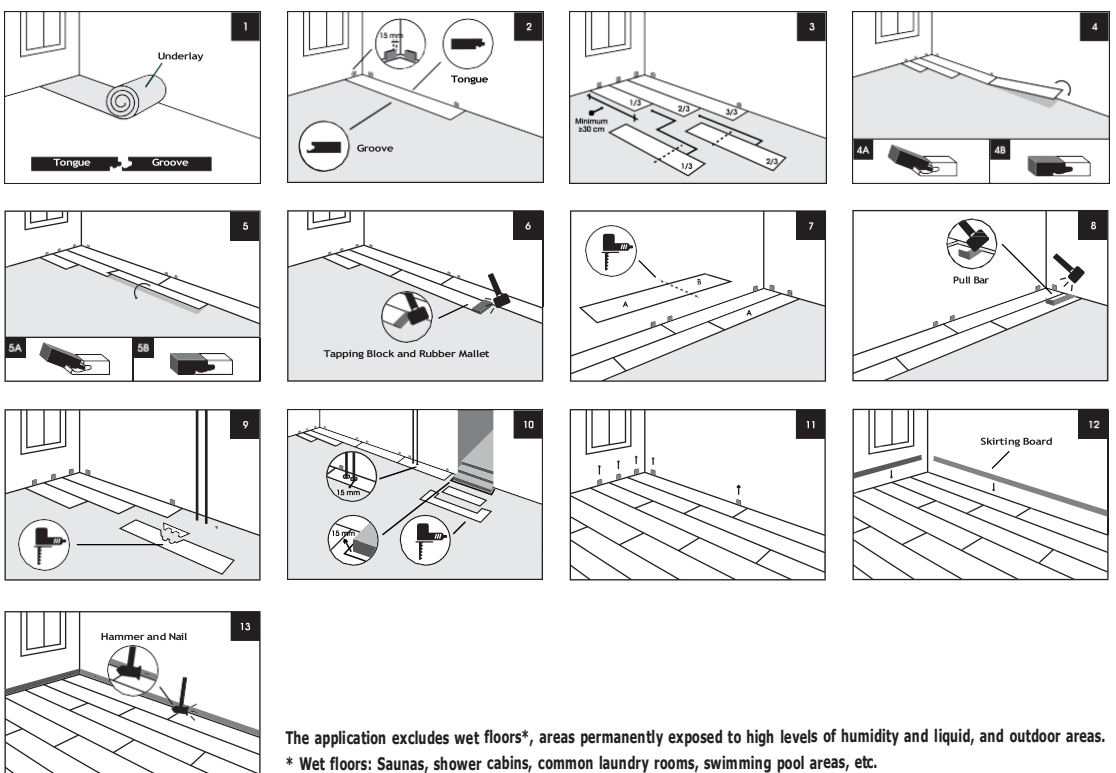
- The surface must be completely covered with PE foam, which is used for moisture insulation. The PE foam, used as base fitting for flooring, must be laid in parallel with the length of the floor tiles and must cover the floor completely to ensure sound, heat and moisture insulation and eliminate surface irregularities (<2 mm). The foam strips must be laid adjacent to one another and no gaps must be left between sheets.
- Because laminate floors are installed as a floating system, they are not screwed, nailed or glued to the floor.
- During the installation, the distance between joints along the width of two panels must be at least 30 cm.
- The panels, which are manufactured with curved sides and/or special patterns (such as decor tiles), must be shifted accordingly to match the curved side and/or the pattern.
- All laminate flooring panels must have at least 15 mm of clearance in between panels and fixed edges (such as walls, heating pipes, doors, doorframes, sills and so on). The product's warranty will be void if the gap is less than 15 mm.
- The flooring area must not exceed 10 m in length and 8 m in width. Transition ofiles must be used in rooms larger than 10x8 m and panel gaps must be at least 20 mm.
- Transition profiles must also be used in room transitions. Otherwise, the product's warranty will be void.
- Damaged or unfit panels must be separated before and during installation.
- Our products are manufactured in multiple facilities. The floor panels from multiple facilities must not be installed. Otherwise, the product's warranty will be void. Products from the same facility must be grouped according to their production date, and panels with close production dates must be used during installation.
- The installation must be stopped in case of a visible error such as a difference in gloss, level, tone, gap width, or if it is a damaged product.
- The color tone changes between the elements are due to its characteristics (such as knots, patterns and color changes) and are not regarded as defects.
- The shipment must be checked for damages and missing items upon delivery. In case of a defect, it must be recorded through a report detailing the faulty product amount and this report must be signed by the delivery driver. Otherwise, the product's warranty will be void.
- If the products that are thought to be faulty are removed after installation without the knowledge of the installing company's personnel, the product's warranty will be void.
- It is recommended that the panels are installed along the window in square rooms and along the length in rectangular rooms.
- The aforementioned conditions only apply to our first-class quality products. Other products are not under warranty.

### B. Installation

- (Figure 1) Place the underlay (foam) and check tongues and grooves across its length and width.
- (Figure 2) Place panels with both tongues facing the wall starting at the left corner of the room. Place wall spacers (15 mm) before the installation.
- (Figure 3) After the first panel is placed with both tongues facing the wall, place 2/3 of the other panel behind it and follow it with 1/3 of another panel, ensuring that the cut sides are facing the wall.
- (Figure 4) Lower the grooved side to the tongue side with a 30-degree angle and click it into place while ensuring a flat surface to maintain the installation's integrity. See 4A and 4B for details.
- (Figure 5) Lock the panels lengthwise during installation. See 5A and 5B for details.
- (Figure 6) Lock the panels by hammering them widthwise using a tapping block and a rubber mallet. Avoid hard impacts as they may damage the panel locks.
- (Figure 7) After calculating and marking (A and B) the wedging between panels and cutting them accordingly, lock the panels lengthwise. If the B piece is longer than 30 cm, it can be used as a starter in the next row.
- (Figure 8) Hammer the panel in place using a pull bar and a tapping block.
- (Figure 9) Cut the panel in places around heating pipes using a jigsaw making sure to leave at least 15 mm of a gap between the fixed places. After passing the removed parts around the pipe, glue them together with the appropriate adhesive.
- (Figure 10) Cut the flooring to leave a 15-mm gap between the panel and the edges of the steps.
- (Figure 11) Remove all spacers.
- (Figure 12) Cut all the skirting boards to their sizes and prepare them for installation.
- (Figure 13) Fix the skirting boards to the wall using a hammer and nails.

### C. After Installation

- Rubber or felt pieces must be attached to the legs of all fixed or movable furniture.
- Heavy furniture, in particular, must be lifted to move.
- The wheels of wheeled furniture, seats and chairs must be soft.
- Our products are manufactured in accordance with the EN 13329 laminate floor coverings standard.
- The laminates must be cleaned without water and using a well-rung, lint-free microfiber cloth.
- Corrosive products (such as powder detergents) must not be used.
- The laminate must not be sanded.
- Our products are not suitable for use on wet floors due to their wood-based structure. Suitable in environments where the laminate flooring is only temporarily subject to splashing water for less than 72 hours. Any spilled water must be dried off the laminate flooring as soon as possible.



The application excludes wet floors\*, areas permanently exposed to high levels of humidity and liquid, and outdoor areas.  
\* Wet floors: Saunas, shower cabins, common laundry rooms, swimming pool areas, etc.

